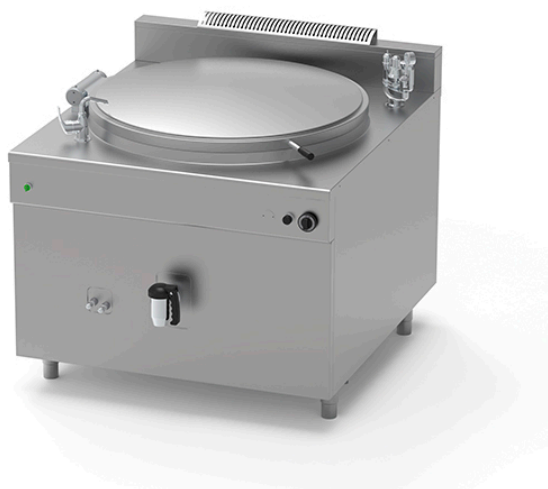


## GAS BOILING PAN OF 200 L, INDIRECT HEATING PQF.IG-200/N

Ref: 1115.824.004  
Icos



Ignition by means of manual piezo igniter and pilot flame.

Heating by means of high-performance tubular burners in AISI 304 stainless steel.

Ventilation grille.

Set of nozzles for various types of gas.

Control of water level in jacket with maximum/minimum taps.

Automatic water filling. **(Connection to a water filtration system is mandatory).**

Jacket pressure control by means of safety valve calibrated at 0.5 bar, vacuum relief valve, pressure gauge (indirect gas version with jacket only).

### FEATURES

Dimensions (WDH)	1000x1150x850 mm
Power	39 kW
Supply	Gas
Capacity	200 l
Vat dimensions	Ø 760x500 mm
Autoclave	-
Packaging dimensions	1040x1240x1250 mm
Gross weight	208 kg