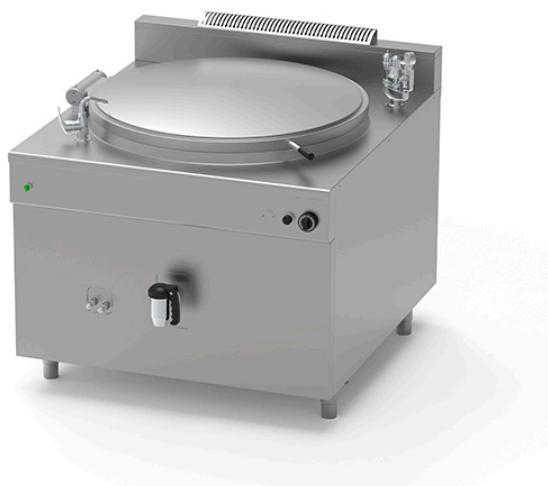


GAS BOILING PAN OF 300 L, INDIRECT HEATING PQF.IG-300/N

Ref: 1115.824.006

Icos



Ignition by means of manual piezo igniter and pilot flame.

Heating by means of high-performance tubular burners in AISI 304 stainless steel.

Ventilation grille.

Set of nozzles for various types of gas.

Control of water level in jacket with maximum/minimum taps.

Automatic water filling. **(Connection to a water filtration system is mandatory).**

Jacket pressure control by means of safety valve calibrated at 0.5 bar, vacuum relief valve, pressure gauge (indirect gas version with jacket only).

FEATURES

Dimensions (WDH)	1200x1270x900 mm
Power	48 kW
Supply	Gas
Capacity	300 l
Vat dimensions	Ø 960x500 mm
Autoclave	-