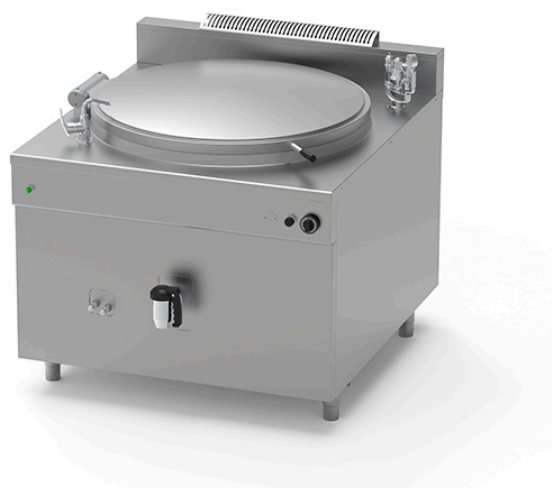


## GAS BOILING PAN OF 300 L WITH AUTOCLAVE, INDIRECT HEATING PQF.IG-300/A

Ref: 1115.824.007

Icos



Ignition by means of manual piezo igniter and pilot flame.

Heating by means of high-performance tubular burners in AISI 304 stainless steel.

Ventilation grille.

Set of nozzles for various types of gas.

Control of water level in jacket with maximum/minimum taps.

Automatic water filling. **(Connection to a water filtration system is mandatory).**

Jacket pressure control by means of safety valve calibrated at 0.5 bar, vacuum relief valve, pressure gauge (indirect gas version with jacket only).

### FEATURES

Dimensions (WDH)	1200x1270x900 mm
------------------	------------------

Power	48 kW
-------	-------

Supply	Gas
--------	-----

Capacity	300 l
----------	-------

Vat dimensions	Ø 960x500 mm
----------------	--------------

Autoclave	yes
-----------	-----