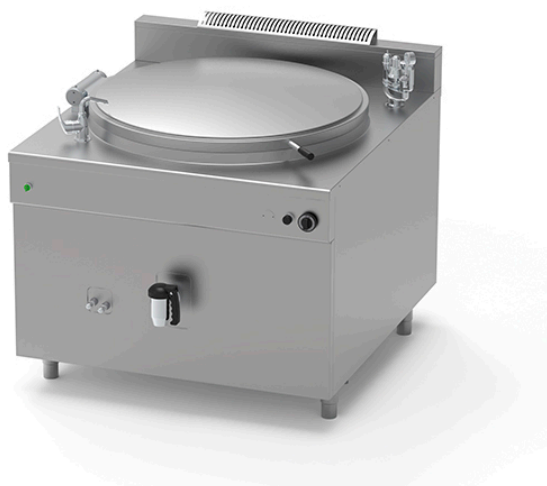


GAS BOILING PAN OF 500 L, INDIRECT HEATING PQF.IG-500/N

Ref: 1115.824.008
Icos



Ignition by means of manual piezo igniter and pilot flame.

Heating by means of high-performance tubular burners in AISI 304 stainless steel.

Ventilation grille.

Set of nozzles for various types of gas.

Control of water level in jacket with maximum/minimum taps.

Automatic water filling. **(Connection to a water filtration system is mandatory).**

Jacket pressure control by means of safety valve calibrated at 0.5 bar, vacuum relief valve, pressure gauge (indirect gas version with jacket only).

FEATURES

| | |
|------------------|-------------------|
| Dimensions (WDH) | 1300x1400x1000 mm |
| Power | 55 kW |
| Supply | Gas |
| Capacity | 500 l |
| Vat dimensions | Ø 1060x600 mm |
| Autoclave | - |