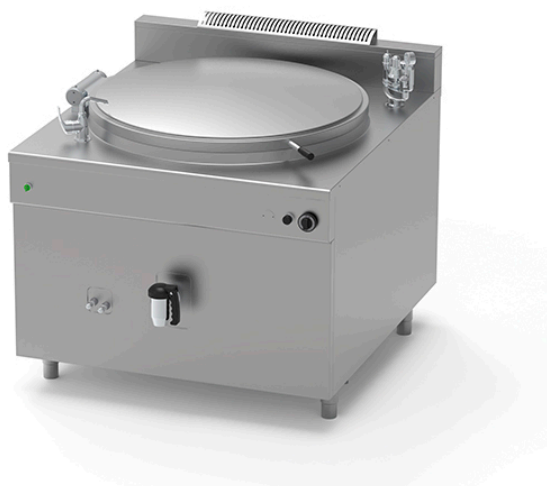


GAS BOILING PAN OF 500 L WITH AUTOCLAVE, INDIRECT HEATING PQF.IG-500/A

Ref: 1115.824.009

Icos



Ignition by means of manual piezo igniter and pilot flame.

Heating by means of high-performance tubular burners in AISI 304 stainless steel.

Ventilation grille.

Set of nozzles for various types of gas.

Control of water level in jacket with maximum/minimum taps.

Automatic water filling. **(Connection to a water filtration system is mandatory).**

Jacket pressure control by means of safety valve calibrated at 0.5 bar, vacuum relief valve, pressure gauge (indirect gas version with jacket only).

FEATURES

Dimensions (WDH)	1300x1400x1000 mm
Power	55 kW
Supply	Gas
Capacity	500 l
Vat dimensions	Ø 1060x600 mm
Autoclave	yes