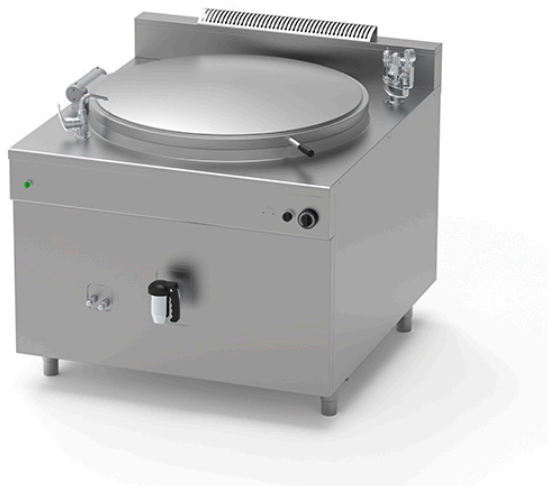


## ELECTRIC BOILING PAN OF 200 L WITH AUTOCLAVE, INDIRECT HEATING PQF.IE-200/A

Ref: 1115.824.010  
Icos



Heating by means of Incoloy hot water heating elements with adjustable power regulator.

Heating element safety thermostat with heating block due to overtemperature or insufficient water level.

Control of water level in jacket with maximum/minimum taps.

Automatic water filling. **(Connection to a water filtration system is mandatory).**

Control of pressure in jacket through operating pressure gauge and safety valve calibrated at 0.5 bar, vacuum relief valve and pressure gauge.

Standard power supply 400V-3N-50Hz.

### FEATURES

Dimensions (WDH)	1000x1150x850 mm
Power	24 kW
Supply	Electric
Capacity	200 l
Vat dimensions	Ø 760x500 mm
Autoclave	yes