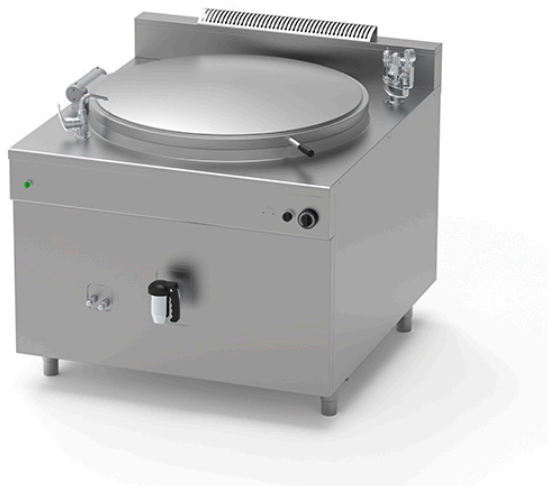


ELECTRIC BOILING PAN OF 500 L, INDIRECT HEATING PQF.IE-500/N

Ref: 1115.824.013
Icos



Heating by means of Incoloy hot water heating elements with adjustable power regulator.

Heating element safety thermostat with heating block due to overtemperature or insufficient water level.

Control of water level in jacket with maximum/minimum taps.

Automatic water filling. **(Connection to a water filtration system is mandatory).**

Control of pressure in jacket through operating pressure gauge and safety valve calibrated at 0.5 bar, vacuum relief valve and pressure gauge.

Standard power supply 400V-3N-50Hz.

FEATURES

| | |
|------------------|-------------------|
| Dimensions (WDH) | 1300x1400x1000 mm |
| Power | 48 kW |
| Supply | Electric |
| Capacity | 500 l |
| Vat dimensions | Ø 1060x600 mm |
| Autoclave | - |