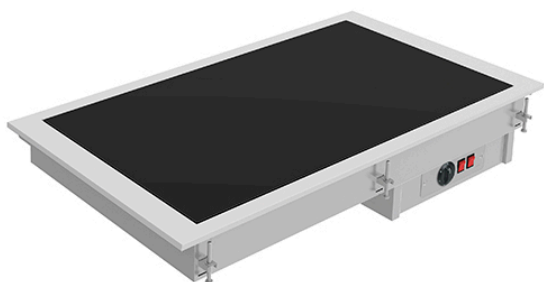


## BUILT-IN BUFFET WITH HEATED GLASS TOP, 2X GN1/1 - BLACK DV-211-S

Ref: 0135.462.001  
 Magnus



Flat, hot plate made of glass ceramic for displaying, conserving and serving hot dishes.

Glass ceramic heating system using hidden silicon resistors attached to the bottom of the plate. Silicon resistors improve heating performance, ensure uniformity and reduce electrical consumption.

Operating temperature of +30 °C a +100 °C on the top plate, adjustable by using a thermostat.

For other installation possibilities, special dimensions, etc., contact us.

### FEATURES

External dimensions (WDH)	790x610x147 mm
Hole dimensions	765x585 mm
Power	905 W
Power supply	230V/1/50 Hz
Capacity	2x GN1/1
Finish	Black