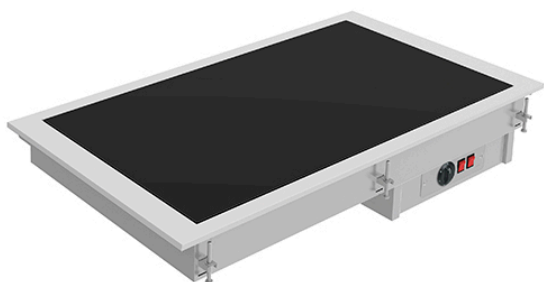


## BUILT-IN BUFFET WITH HEATED GLASS TOP, 3X GN1/1 - BLACK DV-311-S

Ref: 0135.462.002  
 Magnus



Flat, hot plate made of glass ceramic for displaying, conserving and serving hot dishes.

Glass ceramic heating system using hidden silicon resistors attached to the bottom of the plate. Silicon resistors improve heating performance, ensure uniformity and reduce electrical consumption.

Operating temperature of +30 °C a +100 °C on the top plate, adjustable by using a thermostat.

For other installation possibilities, special dimensions, etc., contact us.

### FEATURES

External dimensions (WDH)	1115x610x147 mm
Hole dimensions	1090x585 mm
Power	1355 W
Power supply	230V/1/50 Hz
Capacity	3x GN1/1
Finish	Black